



CLOSE CLEARANCE CONNECTOR HT

Installation & Operation Instructions

A MAJOR CAUSE OF CHIMNEY RELATED FIRES IS FAILURE TO MAINTAIN REQUIRED CLEARANCES (AIR SPACES) TO COMBUSTIBLE MATERIALS. IT IS OF THE UTMOST IMPORTANCE THAT THIS DOUBLE WALL CONNECTOR BE INSTALLED ONLY IN ACCORDANCE WITH THESE INSTRUCTIONS.



MH 14089

Read through all of these instructions before beginning your installation. Failure to install as described in these instructions will void the manufacturer's warranty and may have an effect on your homeowner's insurance and UL listing status. Keep these instructions for future reference.

AN IMPORTANT NOTE ABOUT CLEARANCES

SIMPSON DURA-VENT'S double wall pipe is listed by Underwriter's Laboratories as a connector pipe between (listed) appliance and chimney. The minimum **clearance from pipe to combustible surfaces is 6" from walls, and 8" from ceilings**. The solid fuel burning appliance has a minimum clearance to combustibles, this minimum clearance on the appliance must be adhered to. If two clearances are in conflict, always use the larger clearance distance. The only deviation allowed is if the manufacturer's instructions show that their stove was tested and approved with closer clearance double wall pipe (CCP). (For closer than listed clearance.)

CONNECTOR APPLICATIONS

RESIDENTIAL INSTALLATION: This product may be used any time single wall stovepipe is called for. At the single wall stovepipe clearances it provides extra safety, durability, and efficiency.

For clearance less than specified, the double wall connector must be listed with the appliance, but the connector **shall not be less than 6" from walls, and 8" from ceilings**.

MOBILE HOMES: Solid-fuel appliance installations in mobile homes differ from those in conventional residences in that all components — stove and chimney — **must be listed by and bear the label** of a testing agency approved by the Department of Housing and Urban Development (HUD), and must be installed exactly in accordance with the manufacturer's installation instructions. SIMPSON DURA-VENT Pipe is HUD approved for use in Mobile Homes only if

the stove manufacturer specifically lists this product by brand name and stock number in his installation instructions. Those instructions will also clearly state all clearance requirements and approved installation configurations. **DO NOT USE THIS PRODUCT IN A MOBILE HOME IF (A) the stove to be installed is not listed for use in a mobile home, or (B) if the stove manufacturer's manual does not specify this pipe by name. IN MOBILE HOME INSTALLATIONS IT IS EXTREMELY IMPORTANT THAT ALL MANUFACTURER'S INSTRUCTIONS, MATERIALS SPECS, CLEARANCES, AND LOCAL CODES BE FOLLOWED EXACTLY.**

INSTALLATION NOTES

Proper planning for your double wall installation will result in greater safety, efficiency, and convenience, saving time and money. Use only authorized SIMPSON DURA-VENT (CC) close clearance listed parts. Do not mix other products or improvised solutions. Do not install damaged connector parts.

TOOLS AND EQUIPMENT YOU MAY NEED:

- Eye protection
- Gloves
- Tape measure
- Level
- Screwdriver
- Drill and 1/8" drill bit

PERMITS: Contact local Building or Fire Officials about permits, restrictions, and installation inspection in your area. All wood burning stoves require its own separate connector, and chimney system. **DO NOT ENCLOSE DOUBLE WALL CONNECTOR PIPE** or fittings and/or pass through walls, ceilings, attics or closets.

Appliance Installation:

The appliance must be installed following the manufacturer's instructions. The minimum clearances to combustibles must be maintained. Do not reduce the minimum appliance clearances when installing close clearance connector pipe (CC).

Chimney Installation:

The chimney must be installed according to applicable SIMPSON DURA-VENT, DURA-CHIMNEY (DCR) OR DURA-PLUS (SDP) installation instruction.

GENERAL INSTALLATION PROCEDURES:

1. Position stove and floor shield to conform with the stove manufacturers clearance specifications; try to position it so as to avoid cutting any ceiling joists, roof rafters, or wall studs.
2. Install support box (Figures 1 & 2) or wall thimble (Figures 3 & 4) according to the installation instructions in your Dura-Plus or Dura-Chimney Kit. Note the suggestion regarding wall thimble installation under Step #4 — Through the Wall installations.
3. Snap the connector (CC-C) into the support box, or into the wall thimble. NOTE: The connector (CC-C) is the only component that can connect pipe to chimney; therefore a close clearance connector (CC-C) is necessary in every installation.
4. **Vertical Installations** — (Figures 1 & 2) — Join the pipe, adj. or rigid; insert onto connector, then lower to stove collar (Figure 1). For Figure 2, installations, install tee to stove collar by drilling at least 3, 1/8" holes and screw fastening the tee to the collar. Join the pipe lengths, insert into connector (CC-C), then lower to tee (CC-R). Through-The-Wall Installations — (Figure 3&4) — use the adj. lengths of pipe (CC-PEA) when doing a through-the-wall installation, it is readily adjustable to the height of the chimney thimble. Push the connector (CC-C) into the thimble, snap elbow or pipe onto connector, join the adjustable piece and extend to the tip of the stove or to another piece of pipe screwing adjustable pipe together after proper length has been determined.

BACK OPENING STOVES: (Figure 4) Take a measurement from the center of the stove collar to the wall to determine position of the wall thimble. Snap connector into wall thimble and slide pipe over collar on stove attaching with screws.

5. In all cases, when pipe is correctly placed, be sure connector is securely attached to support or thimble.

CLOSE CLEARANCE CONNECTOR MAINTENANCE:

Creosote and Soot-Formation and need for removal:

When wood is burned slowly, it produces tar and other organic vapors, which combine with expelled moisture to form creosote. The creosote vapors condense in the relatively cool flues of a slow burning fire. As a result, creosote residue accumulates on the flue lining. When ignited, this creosote makes an extremely hot fire.

CLOSE CLEARANCE CONNECTOR CLEANING:

1. **Access** — Double wall connector pipe must be installed so that access is provided for inspection and cleaning.
2. **When to clean** — The connector and chimney should be inspected at least once every month during the heating season to determine if a creosote or soot has built up. Check spark arrestor screens every 2-4 weeks. If creosote or soot has accumulated, it should be removed to reduce the risk of chimney fire.
3. **How to clean** — Have your connector and chimney cleaned by a professional chimney sweep if you have doubts about your ability to clean it. Use a plastic, wood or steel brush.
4. **Coal** — To reduce corrosion in connectors and chimneys where coal is burned, clean the chimney thoroughly within 48 hours of shutting down the stove for the season. Check the chimney lining for sulfuric acid corrosion regularly.
5. **No Chemical Cleaners** — Do not use chemical chimney cleaners. Their use does not eliminate the need for mechanical cleaning and they may be highly corrosive.
6. **In Case of Fire** — If a flue fire occurs, close all appliance draft openings and call your Fire Department. Do not use the chimney again until it is inspected for possible damage.

STOVE RECOMMENDATIONS

Follow the Stove Manufacturers Instructions:

CHOICE: Choose a stove that is listed by a recognized testing agency and is not larger than you need.

FLUES: Connect only one solid-fuel appliance per chimney.

OPERATION: Follow the stove manufacturer's instructions and safety manual for maximum efficiency and safety. Overfiring can damage to stove and double wall connector.

FUELS: Follow the stove manufacturer's instructions and safety manual, not all stoves are equipped to burn coal. Do not burn drift wood, plastic, or chemically treated wood such as railroad ties.

MOBILE HOMES: Not all stoves can be used in Mobile Homes. See manufacturer's instructions.



SIMPSON
DURA-VENT

Post office Box 1510, Vacaville, CA 95688-1510

Close Clearance Connector

NorthlineExpress.com

<http://www.northlineexpress.com>

Toll-Free 1-866-667-8454

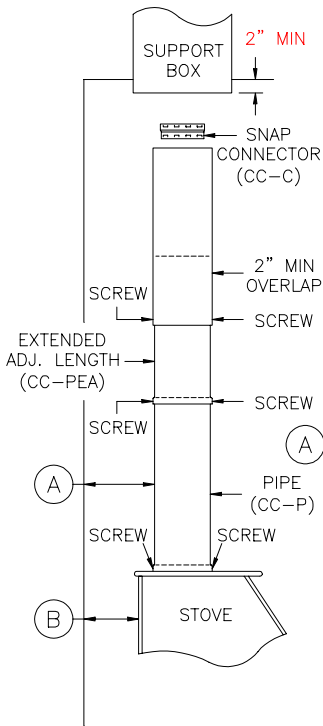


Figure 1

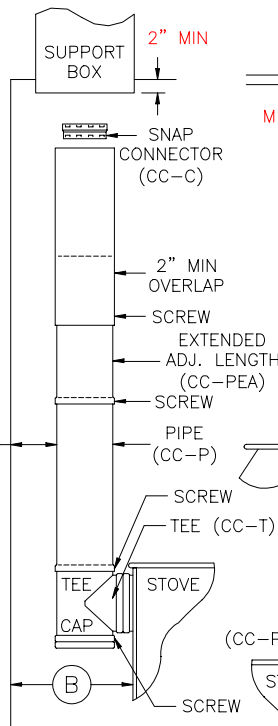


Figure 2

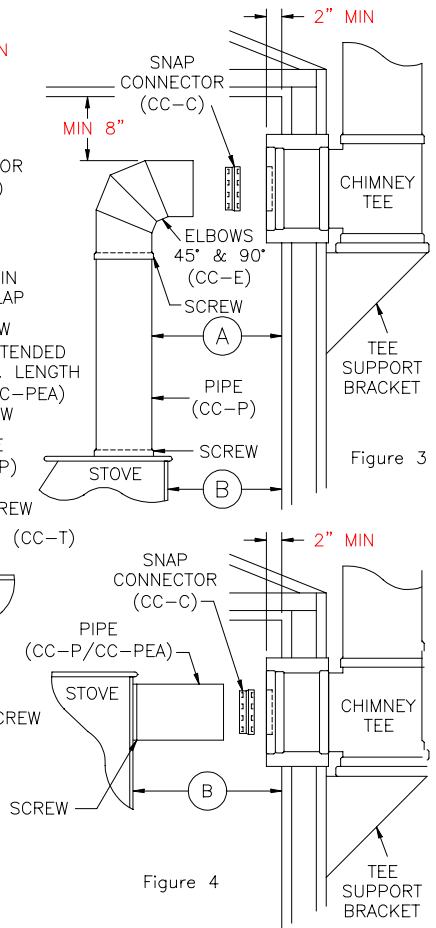


Figure 3

Figure 4

(A) Clearance from close clearance connector pipe to wall is determined by the stove clearance, but not closer than 6".

(B) Clearance from stove to wall is as specified in stove manufacturer's instructions. NOTE: All close clearance double wall pipes have an O.D. 1" larger than their I.D.

Allow approximately 1" loss of length at each pipe connection. When connecting to another manufacturer's chimney system, always screw snap connector into place.

When connecting new and old style double wall pipe, use a minimum of (3) screws at each connection (#8 x 3/8" screw) equally spaced.

WARRANTY

Simpson Dura-Vent warrants Close Clearance Connector Pipe (DVL) for a period of 25 years from date of installation.

All warranties, whether expressed or implied, shall be limited to the replacement (exclusive of installation costs) of the product found to be defective under this warranty providing all recommended installation and maintenance instructions are followed.

OTHER Simpson Dura-Vent Products!
Chimney - DURA-PLUS
Gas Vents - DURA-VENT
Single Wall - DURA-BLACK
Masonry Tops - SENTRY
Masonry Relining - DURA-LINER



SIMPSON
DURA-VENT

Post office Box 1510, Vacaville, CA 95688-1510

Close Clearance Connector

L104