



All-Fuel HT Chimney System 2017 Catalog



All-Fuel HT Chimney System

info@shastavent.com 844-SHASTAV (844-742-7828)
www.shastavent.com

2017

v1.30

Shasta Vent Inc is proud to offer its All-Fuel HT Chimney system to the residential and building heating appliance market. Sold in Europe for years, and now offered in America, Shasta Vent All-Fuel HT Chimney is ETL Listed by Intertek to the HT requirements of the UL 103 standard. Shasta Vent's All-Fuel HT Chimney meets the safety and performance requirements needed by today's high-efficiency appliances.

Shasta Vent All-Fuel HT Chimney is a double wall, solid-filled residential chimney featuring .020" type 304 Stainless Steel inner and outer walls with a 2" clearance to combustibles. All-Fuel HT Chimney also features precision engineered twist-lock end rings and quick and easy Locking Bands. The high-temperature ceramic blanket insulation is encased between stainless steel walls to maintain a strong draft, while maintaining a relatively cooler temperature on the exterior wall. All-Fuel HT Chimney is backed by a Limited Lifetime Warranty.

Applications

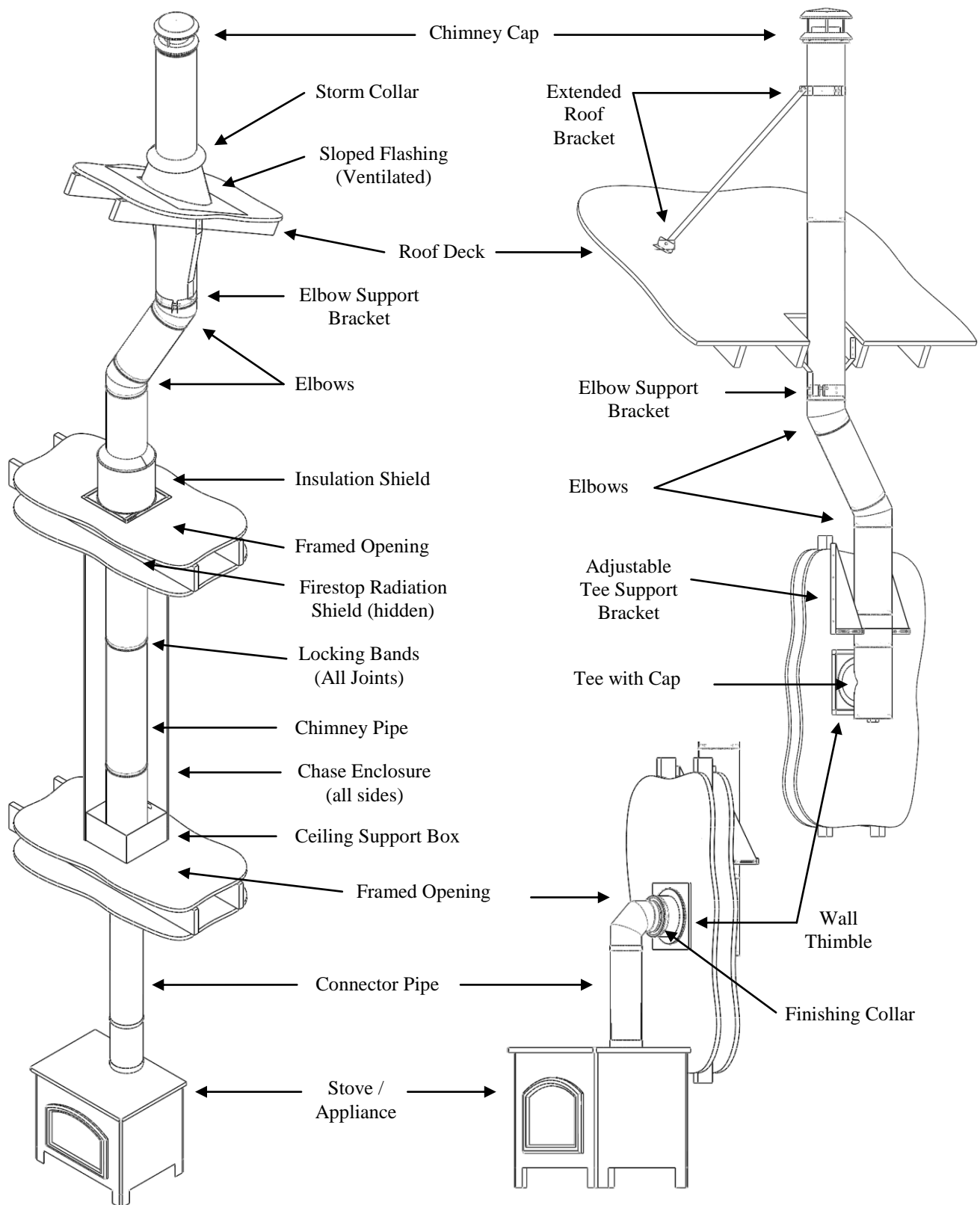
Shasta Vent All-Fuel HT Chimney is available in 6" and 8" diameters and is designed to be used with natural drafting appliances including:

- Residential Wood Stoves, Fireplaces, and Furnaces
- Oil, Coal, Natural Gas, Propane burning appliances
- Zero-Clearance Factory-Built Fireplaces
- Natural drafting Building Heating Appliances

Specifications

- Double Wall Chimney System for Residential and Building Heating Appliances
- ETL Listed by Intertek to the HT requirements of UL 103
- Clearance to combustibles is 2" from chimney pipe sections
- .020" Type 304 Stainless Steel inner and outer walls and end rings
- Twist-lock joints for ease of assembly and Locking Bands for security
- High-Temperature, thin-fiber ceramic insulation blanket maintains superior draft performance
- Available in 6" and 8" diameters
- Up to four 30° elbows, each capable of rotating 360° can be used in the system
- Tested to 1000°F continuously, 1400°F for 1-hour, and 3x 2100°F for 10-minutes as would be encountered in a creosote fire
- Backed by a Limited Lifetime Warranty

Typical Installations



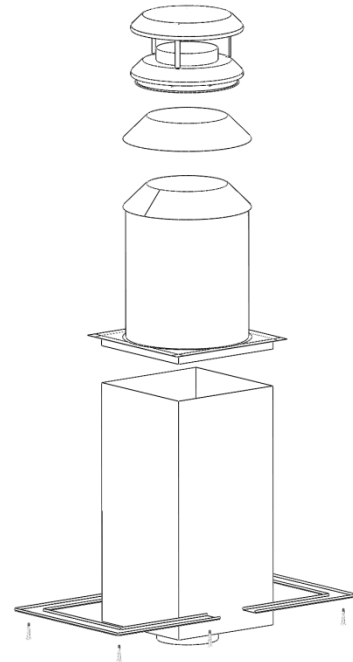
Shasta Vent All Fuel HT Chimney Kits

Shasta Vent All Fuel HT Chimney Kits are available to help with typical installations. The components for a typical installation are included, you just need to add the necessary chimney pipe and flashing.

Thru-The-Ceiling Kit

The Thru-The-Ceiling Kit includes most components needed for a typical through the ceiling installation: a Support Box, Insulation Shield, Storm Collar, and Chimney Cap. You will need to add Chimney Pipe Sections and the correct flashing for your installation, as well as a Firestop Radiation Shield for each additional floor penetration. Please refer to the Installation Instructions.

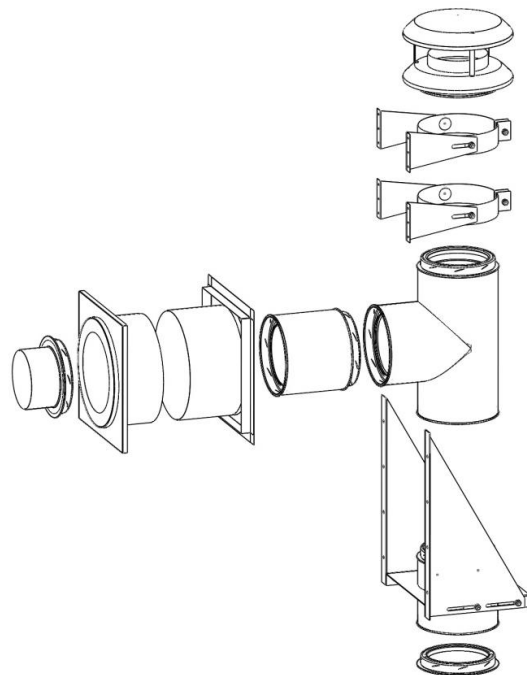
Size:	6"	8"
Part #	6A-TCK	8A-TCK



Thru-The-Wall Kit

The Thru-The-Wall Kit includes most of the component parts needed for a typical through the wall installation: a Finishing Collar, 8" Chimney Pipe Section, Wall Thimble, Tee with Cap, Tee Support, two Adjustable Wall Brackets, and Chimney Cap. You will need to add Chimney Pipe Sections for your installation. Please refer to the Installation Instructions.

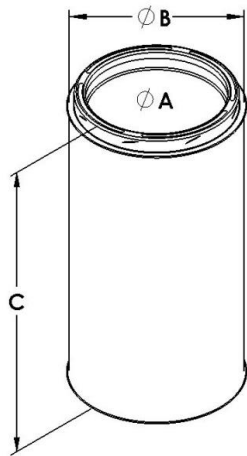
Size:	6"	8"
Part #	6A-TWK	8A-TWK



Shasta Vent All-Fuel Chimney Components

Chimney Pipe Sections

Chimney Pipe sections are designed to twist-lock together and use a Locking Band (supplied with chimney section) to secure the connection. No screws are needed to secure the chimney in place. Chimney Pipe Sections are offered in 8-inch (200mm), 19-inch (500mm), 24-inch (610mm), 39-inch (1000mm), and 48-inch (1220mm) lengths. Note: Chimney Pipe Lengths cannot be cut down. If a different length is necessary, see the Adjustable Chimney Section below.

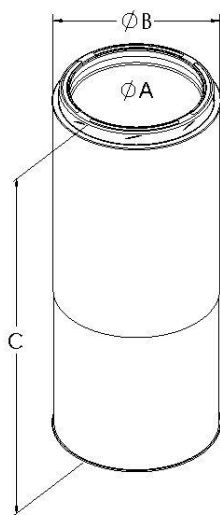


Size:	6"	6"	6"	6"	6"
A	6"	6"	6"	6"	6"
B	8"	8"	8"	8"	8"
C	8" (200mm)	19" (500mm)	24" (610mm)	39" (1000mm)	48" (1220mm)
Part #	6A-08	6A-18	6A-24	6A-36	6A-48

Size:	8"	8"	8"	8"	8"
A	8"	8"	8"	8"	8"
B	10"	10"	10"	10"	10"
C	8" (200mm)	19" (500mm)	24" (610mm)	39" (1000mm)	48" (1220mm)
Part #	8A-08	8A-18	8A-24	8A-36	8A-48

Adjustable Chimney Pipe

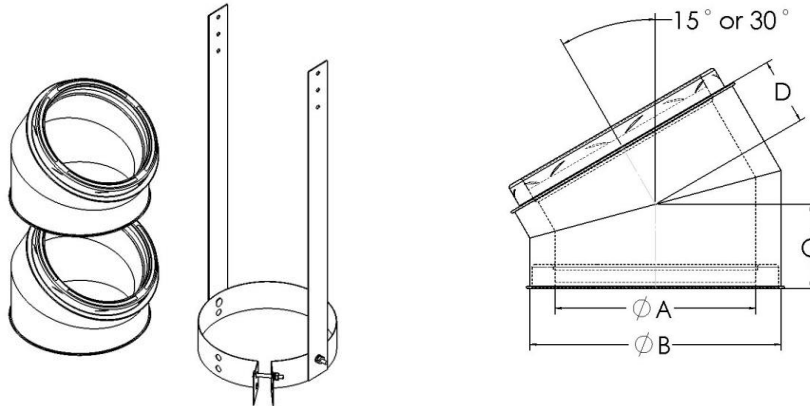
The Adjustable Chimney Pipe is offered when standard lengths of chimney will not fit for your installation, and can be used to achieve specific offset distances for the chimney. The Adjustable Chimney Pipe comes as two sections which slide over one another and compresses down to the necessary size. The Adjustable Chimney Pipe adjusts from approximately 11 to 20 inches. The insulation used to customize the length of the Adjustable Chimney Pipe is included.



Size:	6"	8"
A	6"	8"
B	8"	10"
C	11"-20"	11"-20"
Part #	6A-18A	8A-18A

Elbow Kit

Elbows are sold in pairs as a kit along with an Elbow Strap. Elbows are used for offsets in the chimney system to avoid structural members or other obstacles. Shasta Vent All-Fuel HT Chimney system can accommodate two offsets and returns, for a maximum total of four elbows. Shasta Vent offers 15° and 30° elbows. Elbows cannot be combined to create an angle greater than 30°. Offsets must be supported by either an Elbow Support or Tee Support Bracket.



15-Degree Elbow

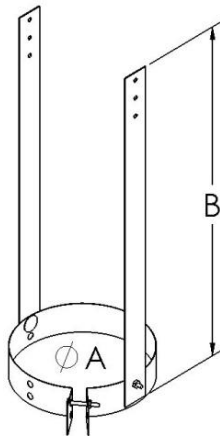
Size:	6"	8"
A	6"	8"
B	8"	10"
C	2-5/8"	2-5/8"
D	2-1/4"	2-1/4"
Part #	6A-E15	8A-E15

30-Degree Elbow

Size:	6"	8"
A	6"	8"
B	8"	10"
C	3-3/8"	3-3/8"
D	2-5/8"	2-5/8"
Part #	6A-E30	8A-E30

Elbow Support Bracket

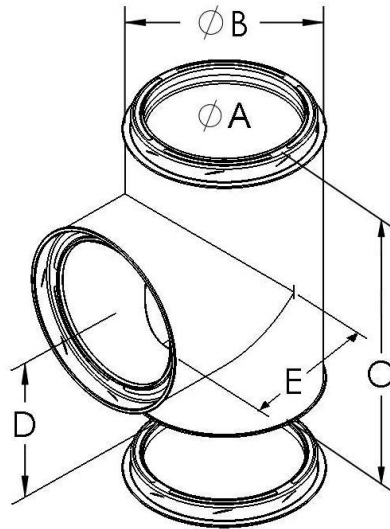
The Elbow Support Bracket is designed to transfer the weight of a chimney offset to nearby structural members. One or more Elbow Supports are required whenever an offset is made in the chimney system. An additional Elbow Support Brackets is required for every 8-ft length of inclined chimney in the offset (between elbows).



Size:	6"	8"
A	8"	10"
B	24"	24"
Part #	6A-ES	8A-ES

Tee and Cap

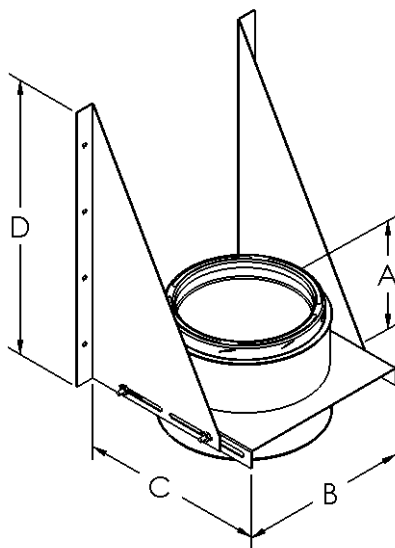
A Tee is used together with a Wall thimble for a through-the-wall installation. The Tee provides access to clean the chimney and changes the exhaust flow from horizontal to vertical. The Tee Cap is provided with the Tee and twist-locks to the bottom of the Tee. A chimney pipe section can also be installed below the Tee, and then the Tee Cap placed at the bottom of that chimney pipe section if needed.



Size:	6"	8"
A	6"	8"
B	8"	10"
C	14-1/4"	16-1/4"
D	6-3/4"	7-3/4"
E	7-1/2"	8-1/2"
Part #	6A-T	8A-T

Tee Support

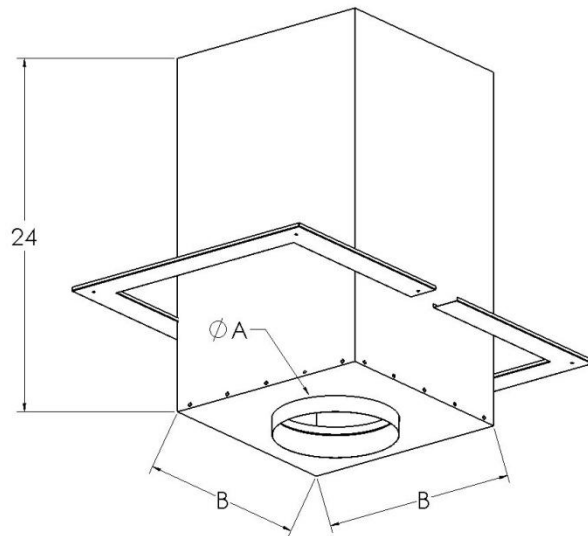
The Tee Support is used to support the chimney system when installing a through-the-wall system. The Tee Support is adjustable and provides a range of 2"-8" between the chimney pipe and the wall. The Tee Support can support a maximum of 50-ft of chimney pipe. An additional Tee Support can be used to help support a taller system.



Size:	6"	8"
A	8"	8"
B	12"	12"
C	13"-19"	13"-19"
D	19-5/8"	19-5/8"
Part #	6A-TS	8A-TS

Ceiling Support Box

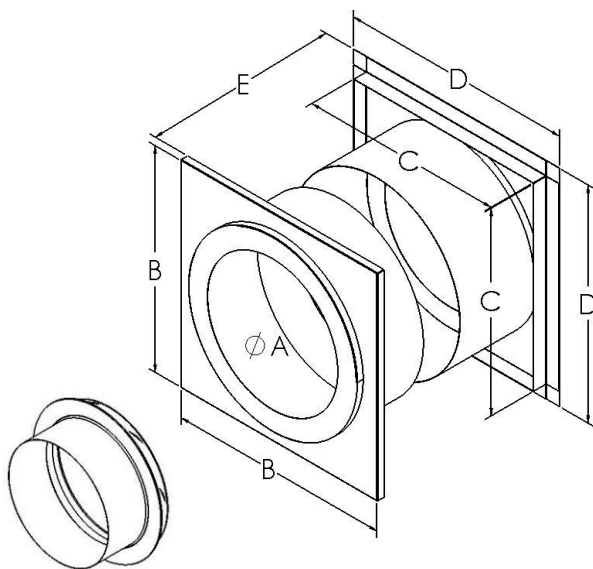
The Ceiling Support Box supports the chimney installation and provides a transition from the stove pipe to the chimney. The Ceiling Support Box can support a maximum of 50-ft of chimney pipe. For a taller system, a Tee Support can be added to help support the additional weight. Trim collar included. Ceiling Support Box can accommodate ceilings from flat to 16/12 pitch (53 degrees).



Size:	6"	8"
A	6"	8"
B	12"	14-1/4"
Part #	6A-SB	8A-SB

Wall Thimble with Finishing Collar

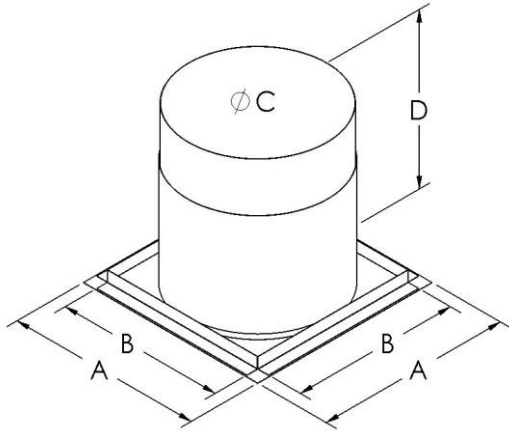
The Wall Thimble is used for through-the-wall chimney installations. It protects the wall as the chimney passes safely through to the outside, and provides a finished look to the framed opening. The Wall Thimble can adjust to accommodate walls up to 10-inches deep. For thicker walls, a field-fabricated extension tube can be installed. The Wall Thimble is used together with the Tee and Tee Support. Includes Finishing Collar used to connect to stove pipe.



Size:	6"	8"
A	8-1/8"	10-1/8"
B	13-1/4"	15-1/4"
C	12"	14"
D	14"	16"
E	6"-10"	6"-10"
Part #	6A-WT	8A-WT

Firestop Radiation Shield

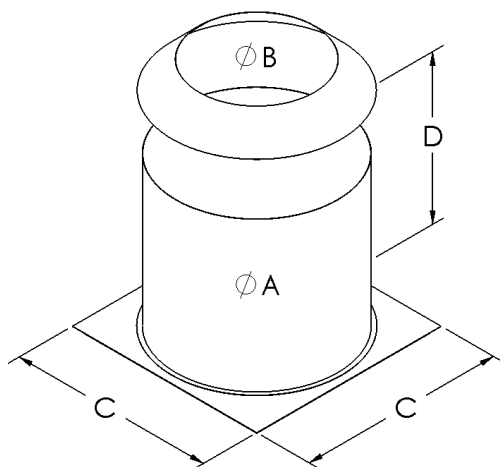
The Firestop Radiation Shield is a fire safety component and is required by the safety standard and building codes in order to achieve a safe chimney installation. A Firestop Radiation Shield must be installed wherever the chimney system penetrates through a floor level of the structure, except at the roof level or where the Ceiling Support Box is located.



Size:	6"	8"
A	14-1/4"	16-1/4"
B	12"	14"
C	10-7/8"	12-7/8"
D	11"-20"	11"-20"
Part #	6A-FS	8A-FS

Insulation Shield

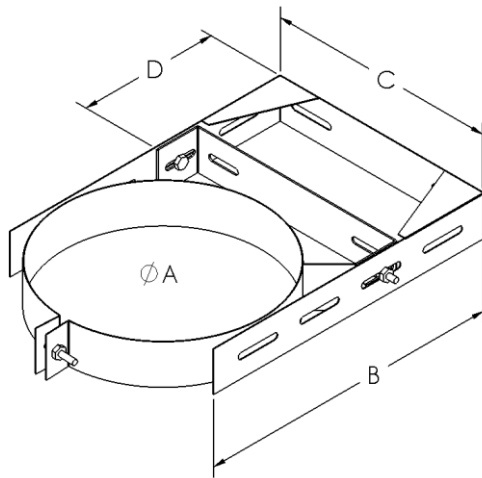
The Insulation Shield prevents building insulation and other debris from contacting the Chimney. The Insulation Shield is required either in the attic or another location where the Chimney pipe could contact building insulation or debris, and is a critical component for a safe installation. Typically, the Insulation Shield is placed on top of the framing of the last floor level before the chimney exits through the roof. The Insulation Shield is not required if the chimney is fully enclosed in a chase in the attic space.



Size:	6"	8"
A	12"	14"
B	8"	10"
C	14"	16"
D	13"	13"
Part #	6A-IS	8A-IS

Adjustable Wall Bracket

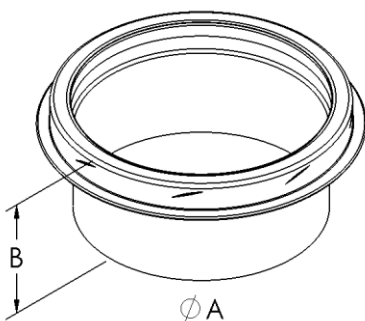
The Adjustable Wall Bracket helps to secure the chimney in place when mounted to a structure or wall. Adjustable Wall Brackets are required at least every 10-feet, unless the chimney is otherwise held in place by a Ceiling Support Box, Tee Support, or passing through a Firestop Radiation Shield. The Adjustable Wall Bracket provides lateral stability, but does not support the weight of the chimney system. Adjustable Wall Brackets provide between 2" to 8" of adjustment between the chimney pipe and the wall.



Size:	6"	8"
A	8"	10"
B	13-3/4"	13-3/4"
C	8-1/4"	10-1/4"
D	2"-8"	2"-8"
Part #	6A-WB	8A-WB

Finishing Collar

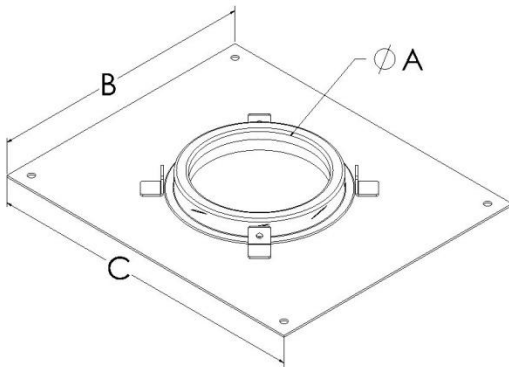
The Finishing Collar transitions from stove pipe to the chimney for through-the-wall installations together with a Wall Thimble and Tee, and installations using the Roof Support. The Finishing Collar is not needed with the Ceiling Support Box, as the transition piece is built into the Support Box. The Finishing Collar provides a cleaner look to the end of the chimney pipe, and also provides a means of securely attaching the stove pipe to the chimney.



Size:	6"	8"
A	6"	8"
B	4"	4"
Part #	6A-FC	8A-FC

Anchor Plate

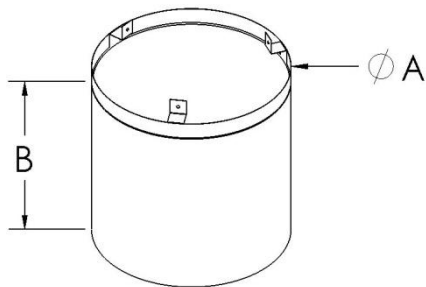
The Anchor Plate is used to mount Shasta Vent All-Fuel Chimney to a masonry fireplace or directly to an appropriate appliance. Anchoring hardware is not provided.



Size:	6"	8"
A	6"	8"
B	14"	14"
C	17"	17"
Part #	6A-AP	8A-AP

Roof Radiation Shield

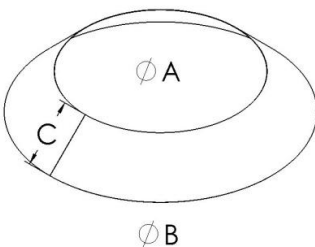
The Roof Radiation Shield provides protection for joists where the chimney system passes through the roof. The Roof Radiation Shield is only required if the chimney is enclosed in a chase immediately prior to passing through the roof. If the chimney system is unenclosed before it passes through the roof, the Roof Radiation Shield is not required.



Size:	6"	8"
A	10"	12"
B	12"	12"
Part #	6A-RRS	8A-RRS

Storm Collar

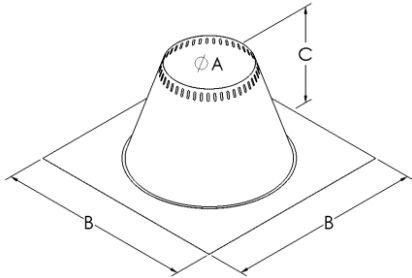
The Storm Collar works together with the Flashing to provide a weatherproof seal where the chimney penetrates through the roof. The Storm Collar is installed directly above the Flashing and must be sealed to the chimney using high-temperature silicone sealant (RTV 500°F or better).



Size:	6"	8"
A	8"	10"
B	12-5/8"	14-5/8"
C	3-1/4"	3-1/4"
Part #	6A-SC	8A-SC

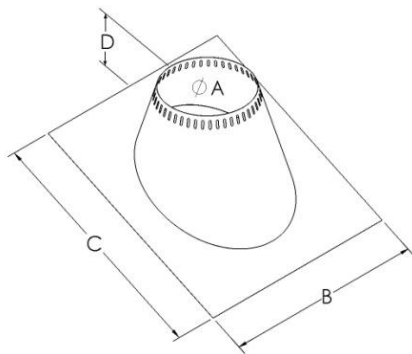
Ventilated Flashings

The Flashing provides a weather resistant means of sealing the chimney system where it passes through the roof. A Ventilated Flashing is required when the chimney is installed in an unventilated chase enclosure or is fully enclosed through the attic. Flashings are available from 0/12 up to 12/12 pitch.



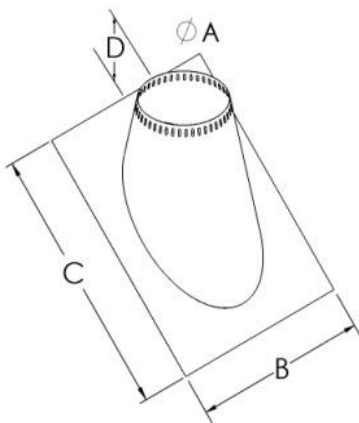
Flat Roof Flashing (0/12 pitch roofs)

Size:	6"	8"
A	9"	11"
B	28"	28"
C	14"	14"
Part #	6A-VRF0	8A-VRF0



Sloped Pitch (0/12 - 6/12 pitch roofs)

Size:	6"	8"
A	9"	11"
B	26"	26"
C	28"	28"
D	7-1/2"	7-1/2"
Part #	6A-VRF6	8A-VRF6

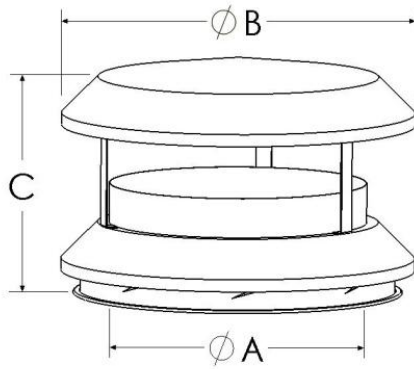


Steep Pitch (7/12 - 12/12 pitch roofs)

Size:	6"	8"
A	9"	11"
B	26"	26"
C	32"	32"
D	7-1/2"	7-1/2"
Part #	6A-VRF12	8A-VRF12

Chimney Cap

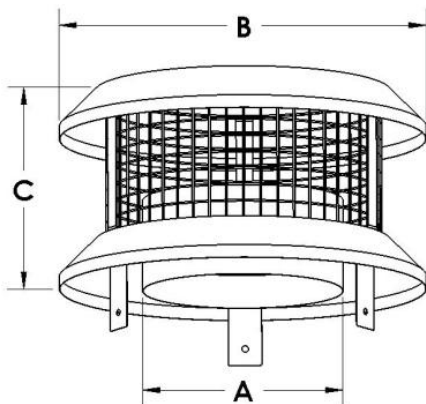
The Chimney Cap tops off the chimney system, helps to retain sparks and embers, and protects the chimney opening from infiltration of weather, debris, and animals. The Chimney Cap features a removable spark arrestor screen (not shown).



Size:	6"	8"
A	6"	8"
B	11"	11"
C	7-3/4"	7-3/4"
Part #	6A-CD	8A-CD

Universal Chimney Cap

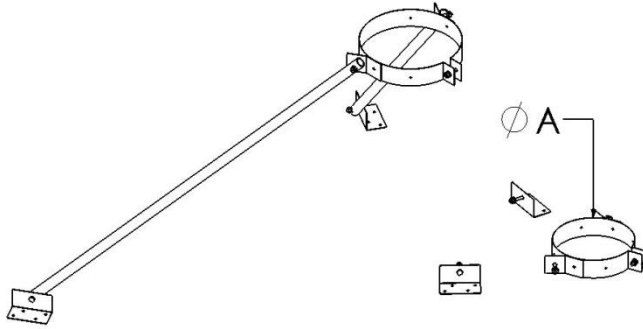
The Universal Chimney Cap can attach to other manufactured chimney systems to replace a missing cap. The Universal Chimney Cap slides into the existing chimney section and the legs are secured with screws on the exterior of the chimney pipe. The Chimney Cap features a removable spark arrestor screen.



Size:	6"	8"
A	6"	8"
B	11"	11"
C	6-3/4"	6-3/4"
Part #	6A-CDU	8A-CDU

Extended Roof Bracket

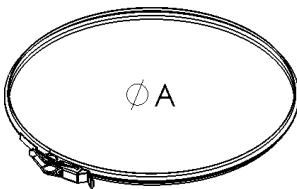
The Extended Roof Bracket is used to help support the chimney where it extends more than 5-feet above the roof. An Extended Roof Bracket or other support must be used for every additional 5-feet of chimney above the roof. Electrical conduit/pipe for the legs is not included.



Size:	6"	8"
A	8"	10"
Part #	6A-ERB	8A-ERB

Locking Band

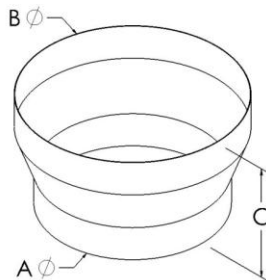
The Locking Band is used to secure chimney pipe joint connections. After the chimney sections are twist-locked together, the Locking Band is wrapped around the joint and provides additional security. The Locking Band features a quick and easy hook & loop closure method. Locking Bands are provided with Chimney Pipe Sections, Tees, Elbows, and Caps.



Size:	6"	8"
A	8"	10"
Part #	6A-LB	8A-LB

Increaser

The Increaser is a single-wall stainless steel component which allows the connector pipe to increase from 5" to 6" diameter, or from 7" to 8" diameter. The Increaser is attached between the connector pipe and the Support Box. The Increaser is secured with screws for a positive connection.



Size:	6"	8"
A	5"	7"
B	6"	8"
C	3-3/8"	3-3/8"
Part #	6S-INC	8S-INC

LIMITED LIFETIME WARRANTY

Shasta Vent Inc (Shasta Vent) provides this limited lifetime warranty for all of its products. Subject to the limitations set forth below, Shasta Vent warrants that its products will be free from defects in material or manufacturing, if properly installed, maintained and used. Shasta Vent products are fully warranted if installed only by a professional installer (see below for definition). This Warranty is not transferable from the original homeowner. This warranty does not cover normal wear and tear, smoke damage or damage caused by chimney fires, acts of God, or any product that was: (1) modified or altered; (2) improperly serviced, inspected or cleaned; or (3) subject to negligence or any use not in accordance with the installation instructions included with the product as determined by Shasta Vent.

Shasta Vent provides the following warranties for its products: One Hundred Percent (100%) replacement for 15 years from the date of purchase, and replacement at 50% of MSRP thereafter. All warranty obligations of Shasta Vent shall be limited to replacement of the warranted item(s). This remedy shall constitute Shasta Vent's sole obligation and sole remedy under this warranty. This warranty provides no cash surrender value. The terms and conditions of this warranty may not be modified, altered or waived by any action, inaction or representation, whether oral or in writing, except upon the express, written authority of an executive officer of Shasta Vent. Corn, bio-fuels, driftwood or other wood containing salt, preservative-treated lumber, creosote treated lumber, plastic and household trash or garbage, or wood pellets containing such materials must not be burned in the appliance or fireplace. In case of a chimney fire, the chimney must be inspected and approved by a certified Chimney Sweep before reuse. It is the homeowner's responsibility to maintain records of each annual inspection, maintenance, and cleaning by a certified Chimney Sweep.

For purposes of this warranty, a trained professional installer is defined as one of the following: licensed contractors with prior chimney installation experience, CSIA Certified Chimney Sweeps, NFI Certified Specialists, or WETT Certified Professionals.

Shasta Vent must be notified and given the opportunity to inspect defective product prior to replacement under the terms of this limited lifetime warranty. All warranty claims must be submitted with proof of purchase. Labor and installation costs are not covered under this warranty. To obtain warranty service contact Shasta Vent Inc, 401 Ryland St. Ste 301, Reno, NV 89502, or call 844-742-7828.

WHERE LAWFUL, SHASTA VENT DISCLAIMS ALL OTHER WARRANTIES, INCLUDING BUT NOT LIMITED TO IMPLIED WARRANTIES OF MERCHANTABILITY AND FITNESS FOR A PARTICULAR PURPOSE. IN NO EVENT WILL SHASTA VENT BE LIABLE FOR INCIDENTAL, CONSEQUENTIAL, PUNITIVE OR SPECIAL DAMAGES OR DIRECT OR INDIRECT LOSS OF ANY KIND, INCLUDING BUT NOT LIMITED TO PROPERTY DAMAGE AND PERSONAL INJURY. SHASTA VENT'S ENTIRE LIABILITY IS LIMITED TO THE PURCHASE PRICE OF THIS PRODUCT.

SOME STATES DO NOT ALLOW LIMITATIONS ON IMPLIED WARRANTIES, OR THE EXCLUSION OR LIMITATION OF INCIDENTAL OR CONSEQUENTIAL DAMAGES, SO THE ABOVE LIMITATIONS AND EXCLUSIONS MAY NOT APPLY TO YOU. THIS LIMITED LIFETIME WARRANTY GIVES YOU SPECIFIC LEGAL RIGHTS, AND YOU MAY ALSO HAVE OTHER RIGHTS THAT VARY FROM STATE TO STATE.



844-SHASTAV (844-742-7828)

info@shastavent.com

www.shastavent.com